

An aerial photograph showing a multi-lane highway interchange. To the right of the highway is a large, rectangular agricultural field with rows of young trees. A canal runs along the top edge of the image. The text 'LEHI CROSSING SHARED USE PATH' is overlaid in large white letters on the left side of the image.

LEHI CROSSING SHARED USE PATH

Transportation Advisory Board
March 21, 2023



AGENDA

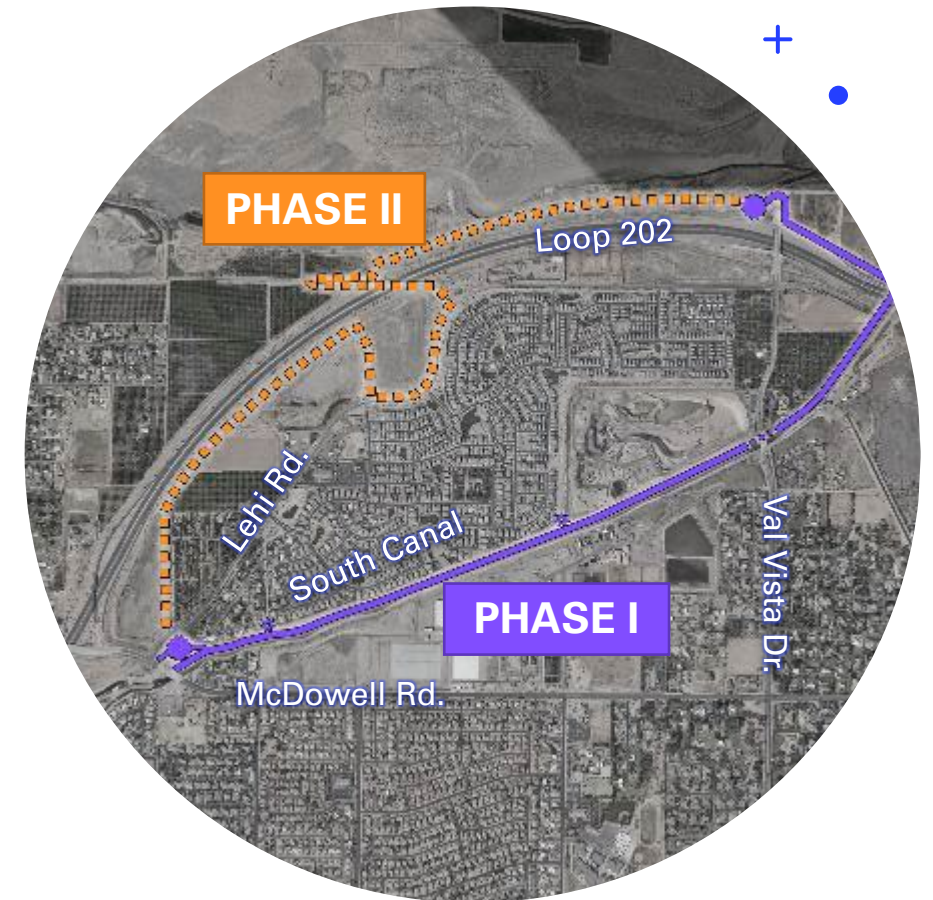
Phase I – Trailheads, SRP Canal, and ADOT ROW Path
Phase II – Feasibility Study

Lehi Crossing SUP

Will provide a **5-Mile loop** along the South Canal and the Loop 202.

Serve **walkers, runners, cyclists, and equestrian users** by pairing a two-way 10' wide asphalt path with a 6' decomposed granite equestrian trail.

Accessible from two trailheads and neighborhood access points.





PHASE I

Trailheads, SRP Canal, and ADOT ROW Path



Phase I

- 2.5 Mile SUP and Equestrian Trail
- Trailhead at McDowell and Lehi
- Trailhead at Val Vista and AZ202
- Parking, Landscape, Art, and Shade Structures at Trailheads
- Lighting and mile markers along the length of the path
- Engineers Estimate of Probable Cost \$5.5M

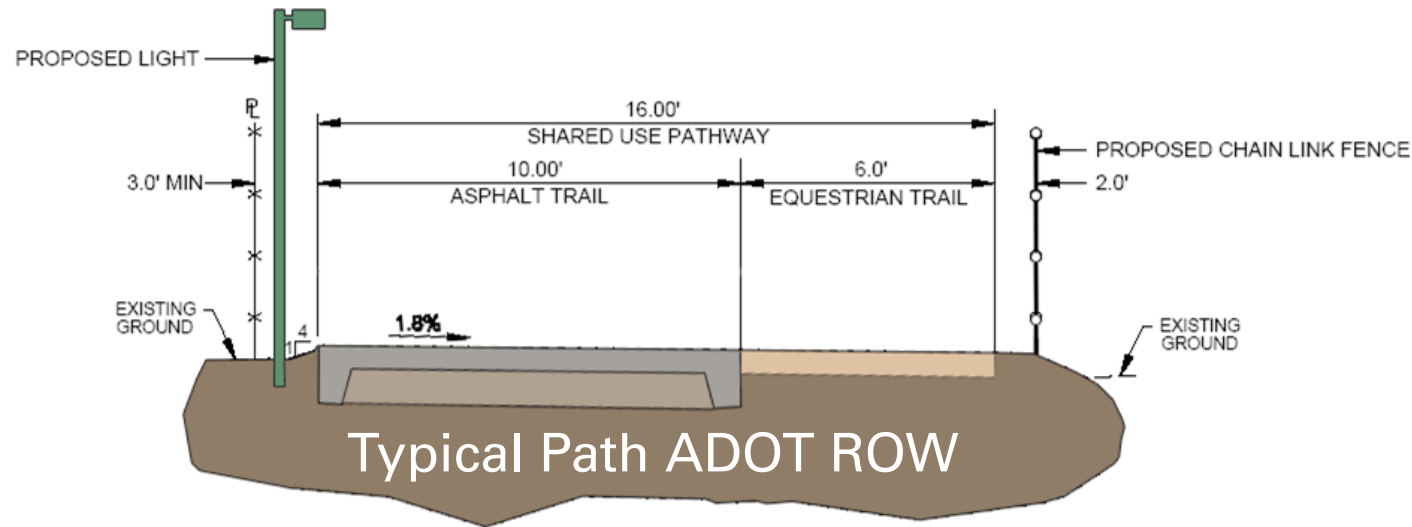
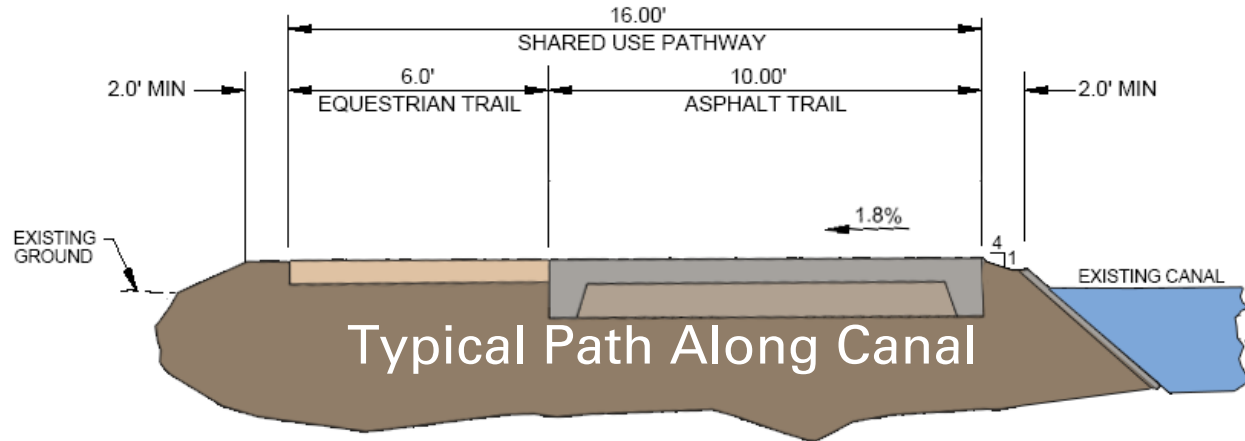
Design Consultant: WSP

Contractor:

Pathway - Haydon

Landscape & Trailheads - Valley Rain

Typical Path Cross Sections



Pathway in context

Project Status

Challenges

- Tunnel exploration.
- Design adjustments in coordination with Tyler-Ranch development.
- No project bids.
- Project divided into two contracts.

Next Steps

- ADOT Encroachment
- Pole Relocations with SRP
- Update construction estimate with Contractor proposal
- Contract execution

Phase I Timeline

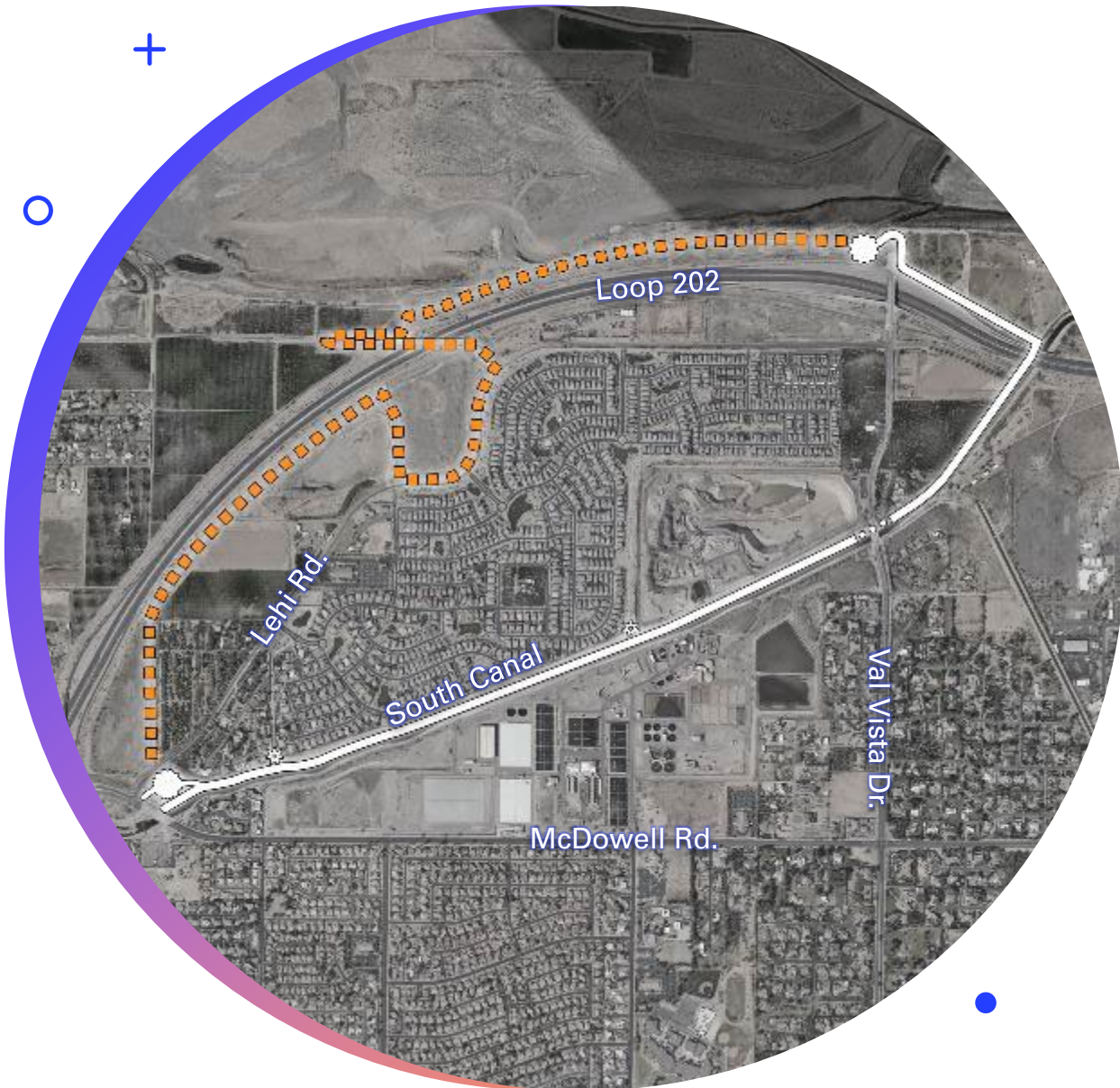




PHASE II

Feasibility Study





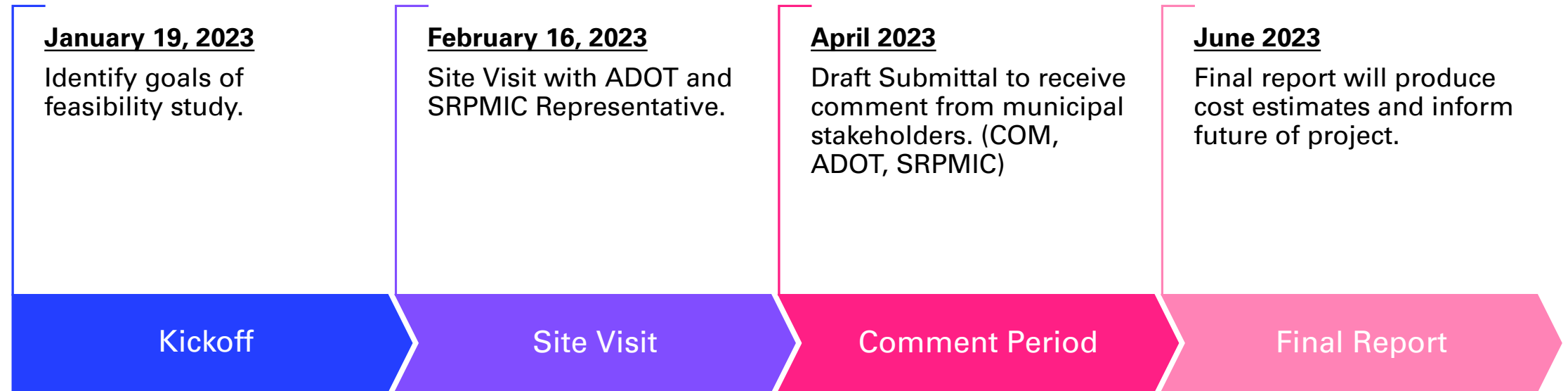
Phase II

FEASIBILITY STUDY ONLY

- Complete 5-Mile Loop
- Identify project stake holders
- Evaluate path and alternatives for suitability
- Produce typical cross sections
- Identify project challenges and regulatory requirements
- Produce probable estimate of cost

Consultant: Y2K Engineering

Lehi Crossing SUP Phase II



LEHI CROSSING SUP

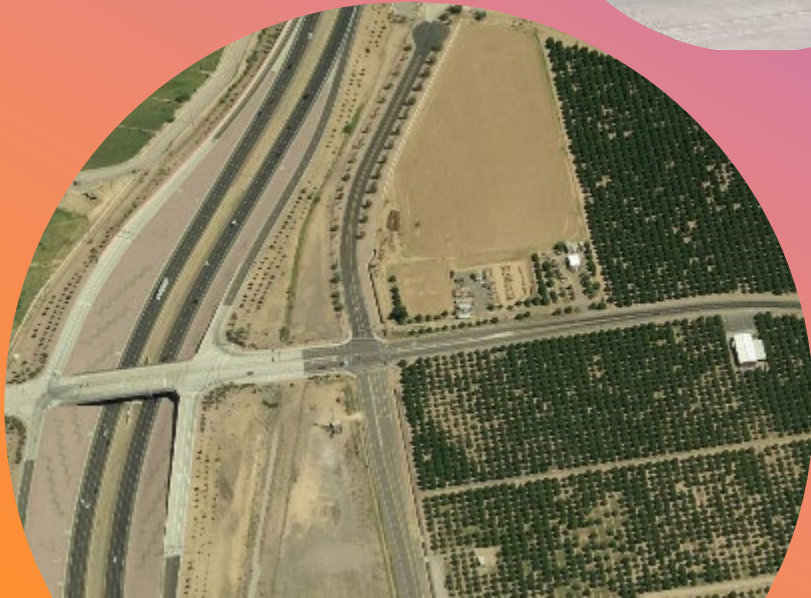
+



o



•



THANK YOU